

The Essential Book of
Open Tuning Chords and Scales
Open D, Open G, Open C, & More

Brought to you by:



FREE SAMPLE

****The Following Chapters are Available in Full Edition****

Table of Contents

Chapter.....	Title
1.....	Open D Tuning
2.....	Open E Tuning
3.....	Open G Tuning
4.....	DADGAD Tuning
5.....	Open D Chords
6.....	Open E Chords
7.....	Open D and Open E Scales
8.....	Open G Chords
9.....	Open A Chords
10.....	Open G and Open A Scales
11.....	URL for BONUS Chord Charts

The Essential Book of Open Tuning Chords and Scales

“Open D Tuning” is a common alternate tuning for the guitar. Whereas traditional or “standard” tuning of guitar strings is E-A-D-G-B-E, the strings of a guitar tuned to open d will be: D-A-D-F#-A-D. For those unfamiliar with guitar tuning the notes from left-to-right are arranged in order of the guitar strings from low to high (thick to thin is easy to remember).

As with most open tunings, open d guitar tuning is commonly played with a slide and commonly associated with various forms of blues music. One of the main reasons is that with this tuning a full chord can be played without needing to fret the neck of the guitar. Though popular with slide guitarists, open d also lends itself well to “finger-picking” guitar players as well.

The fact that one can play a full chord without even fretting a string comes in very handy for playing barre chords and slide guitar. Even if you are new to open tunings it is easy to see why: if you can play a chord with all notes strummed open, you can easily barre your finger straight across any fret and play a chord there too. Then, if you are feeling like really having some fun, stick a slide on your finger and play your heart out on that guitar!

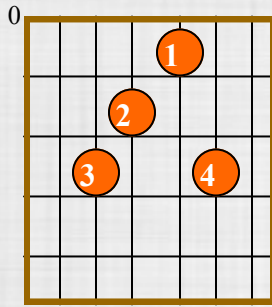
Another very appealing thing about open d is that the lower tuning provides a very rich, deep tone. When you couple that with interesting and sometimes challenging new chords, open d becomes a great way to overcome any boredom, or inspirational blocks you’ve had while playing in standard tuning.

Open D guitar tuning has been used on popular songs from the dawn of the blues to more contemporary music including rock and roll. For example, you may not have known that open d tuning was used in Pearl Jam’s big hit from the 1990’s, *“Even Flow”*.

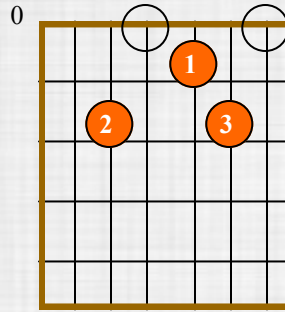
As you can tell, open d tuning is very versatile and lends itself to a wide array of genres. The next page will cover Open D’s “best friend” Open E Tuning...

Open D Tuning Chords

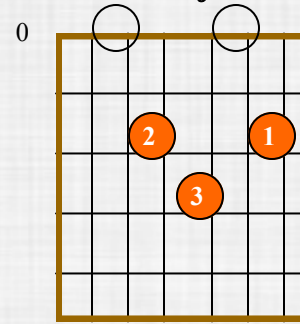
C Maj



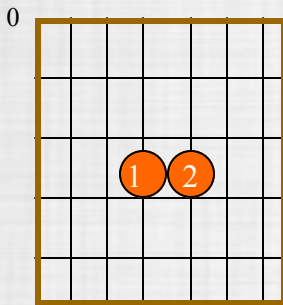
G Maj



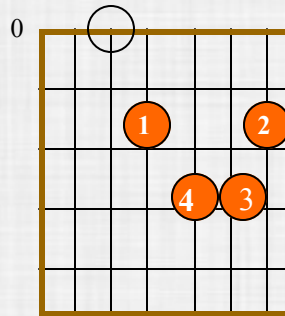
A Maj



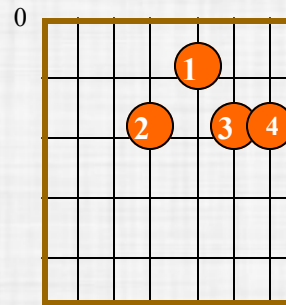
D minor



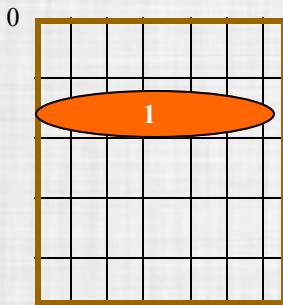
A minor



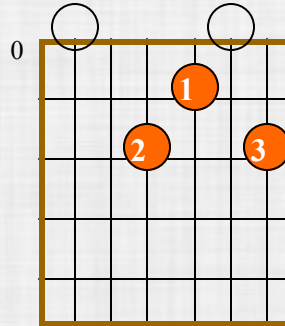
E minor



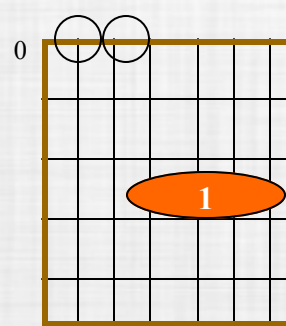
E Major



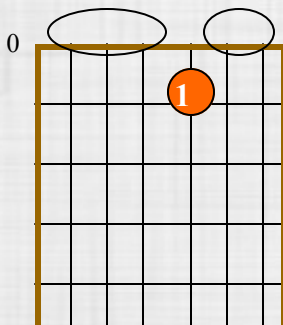
A7



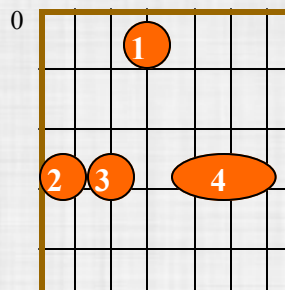
D min 7



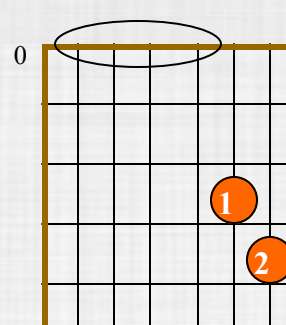
D sus 4



F7



D7



Get the complete book at:

opendtuning.com/open-tuning-chords-scales

exclusive discount code is: save10